



REDISTRICT KINGS

County of Kings Introduction to Redistricting

July 20, 2021

Dr. Jeff Tilton, Senior Consultant
National Demographics Corporation

Redistricting Process

Step	Description
Two Initial Hearings July 20 & August 31 <i>10:00 a.m.</i>	<ul style="list-style-type: none">• Held prior to release of draft maps• Educate and to solicit input on the communities in the Districts
Census Data: Mid/Late August	<ul style="list-style-type: none">• Census Bureau releases official 2020 Census population data.
California Data: Early October 2021	<ul style="list-style-type: none">• California Statewide Database releases California's official 'prisoner-adjusted' 2020 redistricting data.
Draft Map Hearing November 3 <i>6:30 p.m.</i>	<ul style="list-style-type: none">• Discuss and revise the draft maps• Discuss the election sequence• Draft maps due: October 20, 5 p.m.• Draft maps posted to website by October 27, 5 p.m.
Draft Map Hearing December 7 <i>10:00 a.m.</i>	<ul style="list-style-type: none">• Discuss and select a map• Discuss and determine the election sequence; first reading of ordinance• Draft maps due: November 22, 5 p.m.• Draft maps posted to website by November 29, 5 p.m.
Map Adoption December 14 <i>10:00 a.m.</i>	<ul style="list-style-type: none">• Final map adopted via second reading of ordinance

Redistricting Rules and Goals

1. Federal Laws

Equal Population
Federal Voting Rights Act
No Racial Gerrymandering



2. California Criteria for Counties

- 1. Geographically contiguous**
- 2. Undivided neighborhoods and “communities of interest”**
(Socio-economic geographic areas that should be kept together)
- 3. Cities and CDP’s**
- 4. Easily identifiable boundaries**
- 5. Compact**
(Do not bypass one group of people to get to a more distant group of people)

Prohibited:

“Shall not favor or discriminate against a political party.”

Defining Neighborhoods

1st Question: what is your neighborhood?

2nd Question: what are its geographic boundaries?

Examples of physical features defining a neighborhood boundary:

- Natural neighborhood dividing lines, such as highway or major roads, rivers, canals and/or hills
- Areas around parks or schools
- Other neighborhood landmarks

In the absence of public testimony, planning records and other similar documents may provide definition.



Beyond Neighborhoods: Defining Communities of Interest

1st Question: what defines your community?

- Geographic Area, plus
- Shared issue or characteristic
 - Shared social or economic interest
 - Impacted by county policies
- Tell us “your community’s story”

2nd Question: Would this community benefit from being “included within a single district for purposes of its effective and fair representation”?

- Or would it benefit more from having multiple representatives?

Definitions of Communities of Interest may not include relationships with political parties, incumbents, or political candidates.

Beyond Neighborhoods: Communities

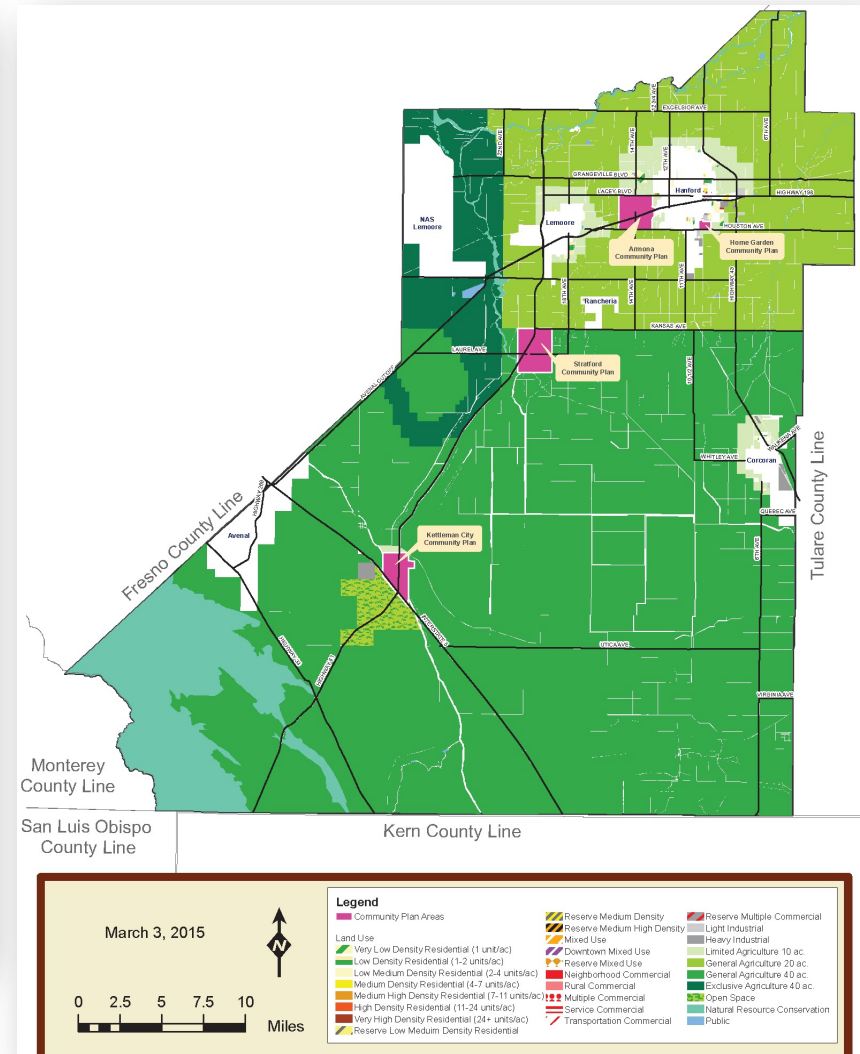
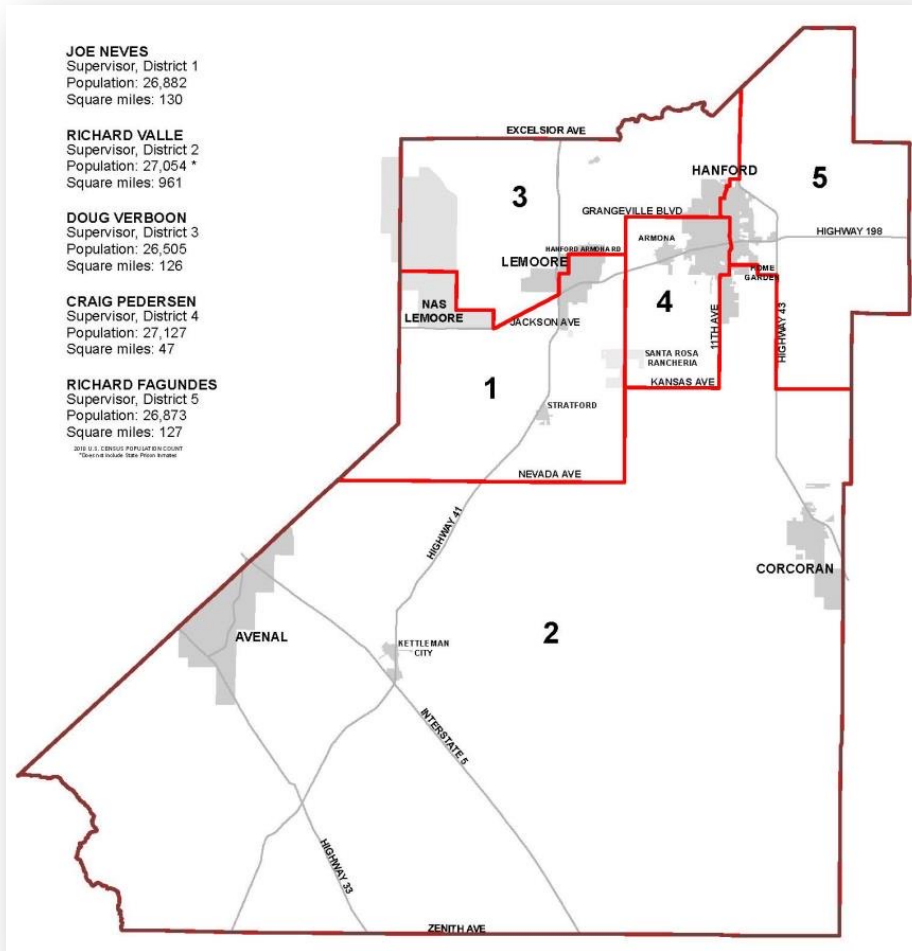
Under the California Elections Code, “community of interest” has a very specific definition in the context of districting and redistricting cities and counties:

A “community of interest” is a population that shares common social or economic interests that should be included within a single district for purposes of its effective and fair representation.

Communities of interest do not include relationships with political parties, incumbents, or political candidates.

(emphasis added)

Possible Neighborhoods / Communities



Public Mapping and Map Review Tools

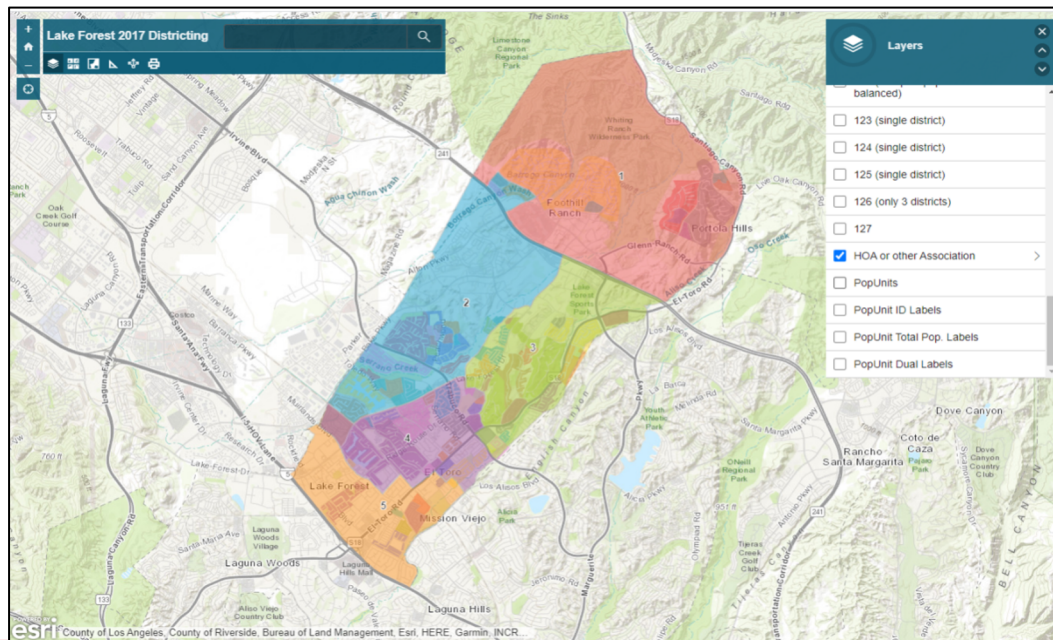
- Different tools for different purposes
- Different tools for different levels of technical skill and interest
 - Simple “review draft maps” tool
 - Easy-to-use “Draw your neighborhood” tool
 - Paper- and Excel-based simple “Draw a draft map” tools
 - Powerful, data-rich “Draw a draft map” tool

Whether you use the powerful (but complicated) online mapping tool, Excel, the paper kit, or just draw on a napkin, we welcome your maps!

Simple Map Review Tool

Online Interactive Review Map

- ESRI's "ArcGIS Online" – similar to Google Maps in ease of use
- Used to review, analyze and compare maps, not to create them
- Includes overlays of "community of interest" and other Story Map data
- [Sample map from Lake Forest](#)



Simple Map Drawing Tool

Paper “Public Participation Kit”

- For those without internet access or who prefer paper
- Total Population Counts only – no demographic numbers
- Geographic units would be tracts, CDP’s and smaller cities

Lake Forest 2017 Districting

Total Population ← by Population Unit

Population in each of the 5 Districts must be between 14,680 and 16,225

A version of this map that allows you to zoom in and out for more detail is available as a link from the City website.

