



REDISTRICT KINGS

County of Kings Introduction to Redistricting

July 27, 2021

Dr. Jeff Tilton, Senior Consultant
National Demographics Corporation

Redistricting Process

Step	Description
Initial Hearings July 20, July 27, August 31 <i>10:00 a.m.</i>	<ul style="list-style-type: none">• Held prior to release of draft maps• Educate and to solicit input on the communities in the Districts
Census Data: Mid/Late August	<ul style="list-style-type: none">• Census Bureau releases official 2020 Census population data.
California Data: Early October 2021	<ul style="list-style-type: none">• California Statewide Database releases California's official 'prisoner-adjusted' 2020 redistricting data.
Draft Map Hearing November 3 <i>6:30 p.m.</i>	<ul style="list-style-type: none">• Discuss and revise the draft maps• Discuss the election sequence• Draft maps due: October 20, 5 p.m.• Draft maps posted to website by October 27, 5 p.m.
Draft Map Hearing December 7 <i>10:00 a.m.</i>	<ul style="list-style-type: none">• Discuss and select a map• Discuss and determine the election sequence; first reading of ordinance• Draft maps due: November 22, 5 p.m.• Draft maps posted to website by November 29, 5 p.m.
Map Adoption December 14 <i>10:00 a.m.</i>	<ul style="list-style-type: none">• Final map adopted via second reading of ordinance

Redistricting Rules and Goals

1. Federal Laws

Equal Population
Federal Voting Rights Act
No Racial Gerrymandering



2. California Criteria for Counties

1. Geographically contiguous
2. Undivided neighborhoods and “communities of interest”
(Socio-economic geographic areas that should be kept together)
3. Cities and CDP’s
4. Easily identifiable boundaries
5. Compact
(Do not bypass one group of people to get to a more distant group of people)

Prohibited:

“Shall not favor or discriminate against a political party.”

Defining Neighborhoods

1st Question: what is your neighborhood?

2nd Question: what are its geographic boundaries?

Examples of physical features defining a neighborhood boundary:

- Natural neighborhood dividing lines, such as highway or major roads, rivers, canals and/or hills
- Areas around parks or schools
- Other neighborhood landmarks

In the absence of public testimony, planning records and other similar documents may provide definition.



Beyond Neighborhoods: Defining Communities of Interest

1st Question: what defines your community?

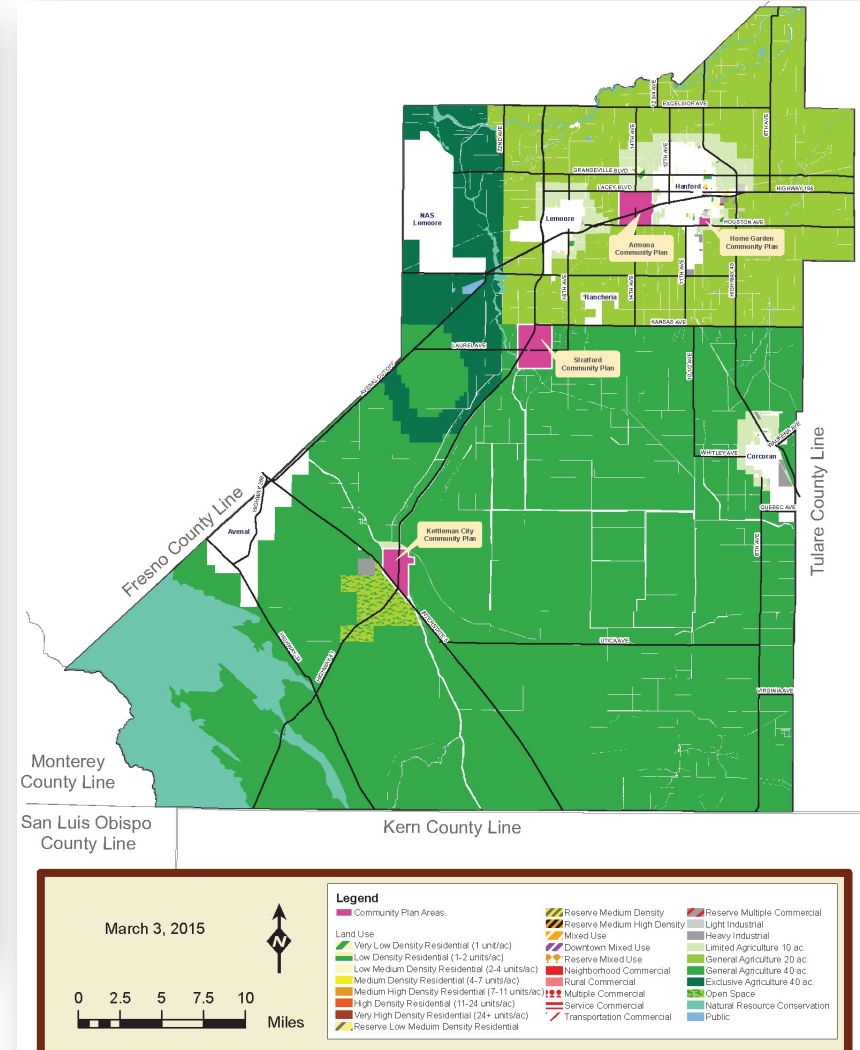
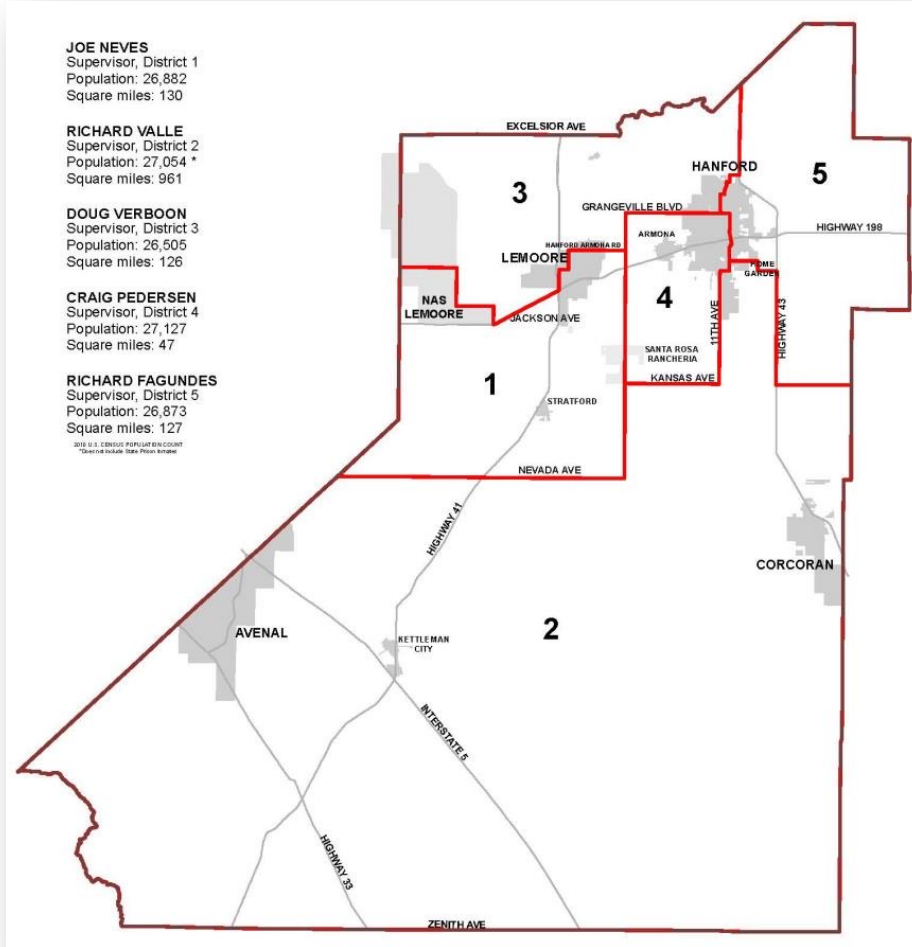
- Geographic Area, plus
- Shared issue or characteristic
 - Shared social or economic interest
 - Impacted by county policies
- Tell us “your community’s story”

2nd Question: Would this community benefit from being “included within a single district for purposes of its effective and fair representation”?

- Or would it benefit more from having multiple representatives?

Definitions of Communities of Interest may not include relationships with political parties, incumbents, or political candidates.

Possible Neighborhoods / Communities



Public Mapping and Map Review Tools

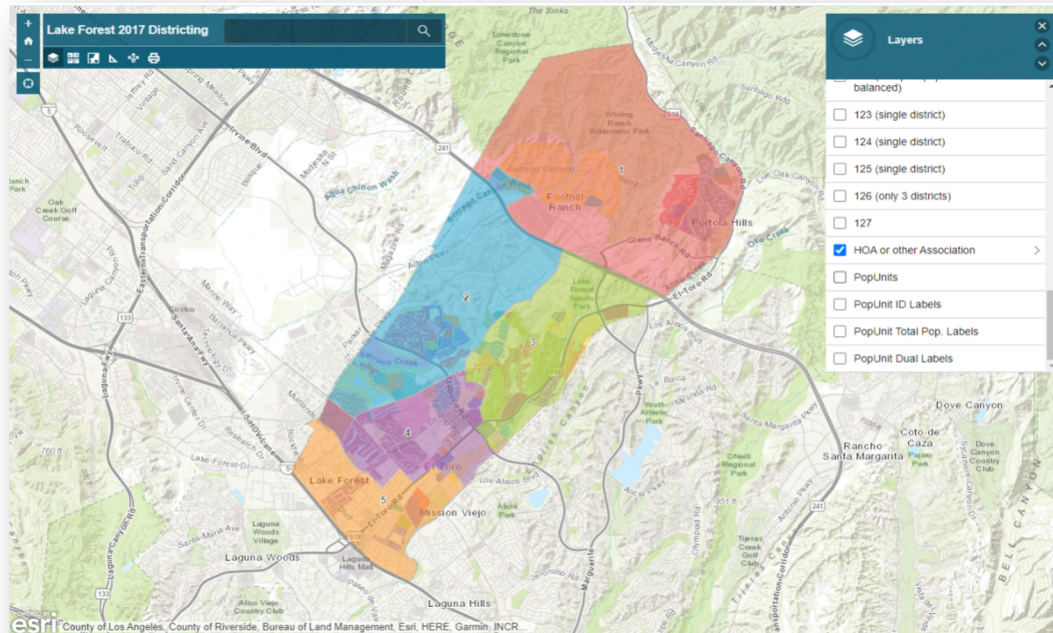
- Different tools for different purposes
- Different tools for different levels of technical skill and interest
 - Simple “review draft maps” tool
 - Easy-to-use “Draw your neighborhood” tool
 - Paper- and Excel-based simple “Draw a draft map” tools
 - Powerful, data-rich “Draw a draft map” tool

Whether you use the powerful (but complicated) online mapping tool, Excel, the paper kit, or just draw on a napkin, we welcome your maps!

Simple Map Review Tool

Online Interactive Review Map

- ESRI's "ArcGIS Online" – similar to Google Maps in ease of use
- Used to review, analyze and compare maps, not to create them
- Includes overlays of “community of interest” and other Story Map data
- [Sample map from Lake Forest](#)



Paper “Public Participation Kit”

- 



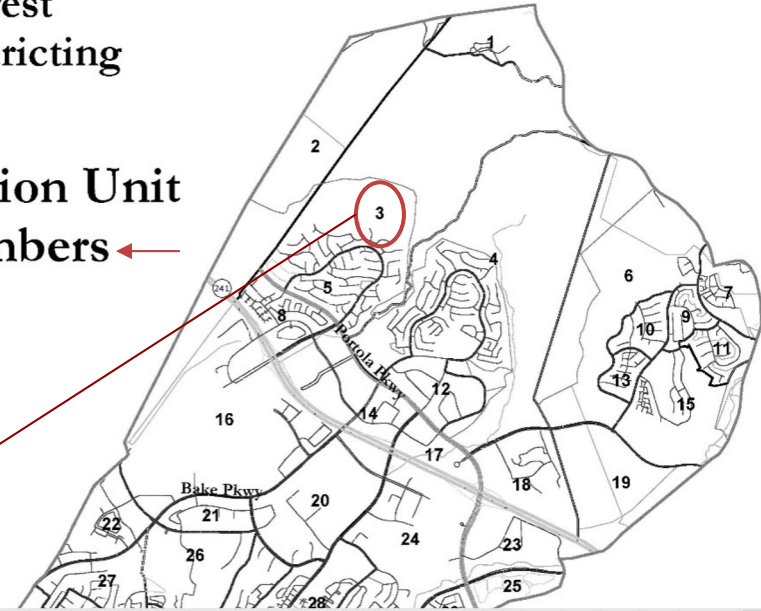
Simple Map Drawing Tool + Excel Supplement

“Public Participation Kit”

- For those who know Excel and do not wish to use online tools
- Adds CVAP data
- Excel does the math
- Geographic units would be tracts, CDP's and smaller cities

Lake Forest 2017 Districting

Population Unit ID Numbers



AutoSave Off Lake Forest 5-district Kit_ENG.xlsx

File Home Insert Page Layout Formulas Data Review View Help Acrobat

Clipboard Font Alignment Number

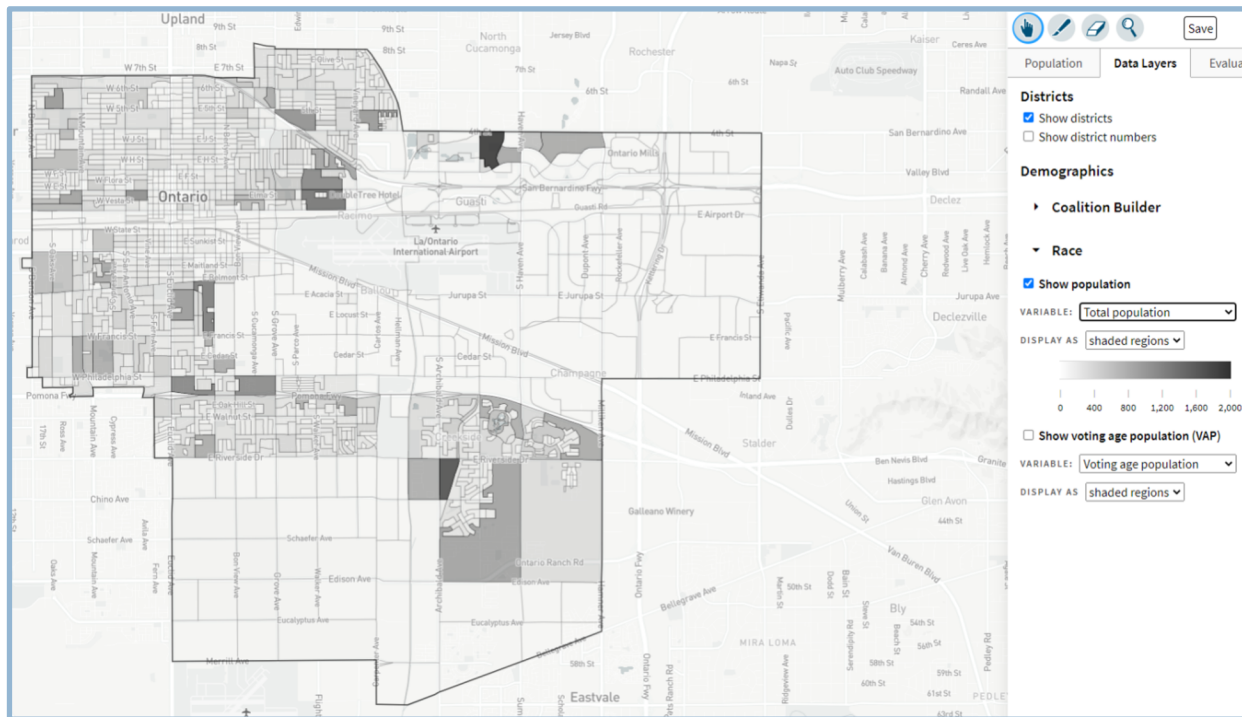
	A	B	C	D	E	F	G	H	I	J	K	L	M	N	O	P	Q	R	S	T	U	V
1		Pop	Total Population				Voting Age Population				Citizen Voting Age Population				Nov. 2014 Registration							
2	District (1-7)	Unit	Tot. Pop.	Hisp	NH Wht	NH Blk	NH Asn	total	Hisp	NH Wht	NH Blk	NH Asn	tot	Hisp	NH Wht	NH Blk	NH Asn	tot	Latino	asn	fil	tot
3	1	1,216	642	357	18	15	873	397	442	12	831	390	441	0	0	574	195	7	3	245	63	
4	2	2,367	1,028	1,053	43	96	1,784	741	899	74	1,915	730	1,140	0	45	1,299	435	14	7	555	140	
5	3	1,643	768	278	42	25	1,036	741	236	15	400	235	145	0	20	505	286	3	4	161	73	
6	4	1,768	734	855	62	84	1,272	464	685	62	1,231	461	639	19	111	1,022	366	11	11	391	89	
7	5	2,001	209	1,655	14	79	1,639	144	1,392	64	1,511	88	1,337	12	38	1,776	146	46	7	1,089	67	
8	6	612	56	499	4	39	517	37	440	26	471	22	423	3	15	525	38	15	2	337	18	
9	7	1,753	1,180	541	70	10	1,745	767	474	10	780	512	410	0	0	797	218	7	4	241	70	

		Counts							Percentages										
Geop	Category	1	2	3	4	5	6	7	Unassigned	Total	1	2	3	4	5	6	7	Unassigned	Total
Sums by District Assigned																			
City of San Buenaventura 2017 Public Participation Kit																			
enter your name here																			
Total Pop.		0	0	0	0	0	0	0	107,197	107,197									
Deviation from Ideal		-15,314	-15,314	-15,314	-15,314	-15,314	-15,314	-15,314	0	-100%	-100%	-100%	-100%	-100%	-100%	-100%	-100%	-100%	0.00%
Total CVAP		0	0	0	0	0	0	0	34,182	34,182	#DIV/0!	#DIV/0!	#DIV/0!	#DIV/0!	#DIV/0!	#DIV/0!	#DIV/0!	#DIV/0!	32%
Total Voting Age Population		0	0	0	0	0	0	0	22,928	22,928	#DIV/0!	#DIV/0!	#DIV/0!	#DIV/0!	#DIV/0!	#DIV/0!	#DIV/0!	#DIV/0!	32%
Total Nov. 2014 Registration		0	0	0	0	0	0	0	15,936	15,936	#DIV/0!	#DIV/0!	#DIV/0!	#DIV/0!	#DIV/0!	#DIV/0!	#DIV/0!	#DIV/0!	60%
Total Votes		0	0	0	0	0	0	0	463	463	#DIV/0!	#DIV/0!	#DIV/0!	#DIV/0!	#DIV/0!	#DIV/0!	#DIV/0!	#DIV/0!	2%
Total Unassigned		0	0	0	0	0	0	0	151	151	#DIV/0!	#DIV/0!	#DIV/0!	#DIV/0!	#DIV/0!	#DIV/0!	#DIV/0!	#DIV/0!	4%
Total CVAP		0	0	0	0	0	0	0	83,090	83,090	#DIV/0!	#DIV/0!	#DIV/0!	#DIV/0!	#DIV/0!	#DIV/0!	#DIV/0!	#DIV/0!	21%
Total Voting Age Population		0	0	0	0	0	0	0	22,928	22,928	#DIV/0!	#DIV/0!	#DIV/0!	#DIV/0!	#DIV/0!	#DIV/0!	#DIV/0!	#DIV/0!	28%
Total Nov. 2014 Registration		0	0	0	0	0	0	0	15,936	15,936	#DIV/0!	#DIV/0!	#DIV/0!	#DIV/0!	#DIV/0!	#DIV/0!	#DIV/0!	#DIV/0!	30%
Total Votes		0	0	0	0	0	0	0	463	463	#DIV/0!	#DIV/0!	#DIV/0!	#DIV/0!	#DIV/0!	#DIV/0!	#DIV/0!	#DIV/0!	3%
Total Unassigned		0	0	0	0	0	0	0	77,063	77,063	#DIV/0!	#DIV/0!	#DIV/0!	#DIV/0!	#DIV/0!	#DIV/0!	#DIV/0!	#DIV/0!	72%
Total CVAP		0	0	0	0	0	0	0	15,936	15,936	#DIV/0!	#DIV/0!	#DIV/0!	#DIV/0!	#DIV/0!	#DIV/0!	#DIV/0!	#DIV/0!	49%
Total Voting Age Population		0	0	0	0	0	0	0	15,936	15,936	#DIV/0!	#DIV/0!	#DIV/0!	#DIV/0!	#DIV/0!	#DIV/0!	#DIV/0!	#DIV/0!	2%
Total Nov. 2014 Registration		0	0	0	0	0	0	0	2,630	2,630	#DIV/0!	#DIV/0!	#DIV/0!	#DIV/0!	#DIV/0!	#DIV/0!	#DIV/0!	#DIV/0!	14%
Total Votes		0	0	0	0	0	0	0	63,936	63,936	#DIV/0!	#DIV/0!	#DIV/0!	#DIV/0!	#DIV/0!	#DIV/0!	#DIV/0!	#DIV/0!	60%
Total Unassigned		0	0	0	0	0	0	0	13,274	13,274	#DIV/0!	#DIV/0!	#DIV/0!	#DIV/0!	#DIV/0!	#DIV/0!	#DIV/0!	#DIV/0!	23%
Nov. 2014 Registration		0	0	0	0	0	0	0	1,100	1,100	#DIV/0!	#DIV/0!	#DIV/0!	#DIV/0!	#DIV/0!	#DIV/0!	#DIV/0!	#DIV/0!	1%
Nov. 2014 Registration		0	0	0	0	0	0	0	463	463	#DIV/0!	#DIV/0!	#DIV/0!	#DIV/0!	#DIV/0!	#DIV/0!	#DIV/0!	#DIV/0!	0%
Nov. 2014 Registration		0	0	0	0	0	0	0	30,448	30,448	#DIV/0!	#DIV/0!	#DIV/0!	#DIV/0!	#DIV/0!	#DIV/0!	#DIV/0!	#DIV/0!	28%
Nov. 2014 Registration		0	0	0	0	0	0	0	4,317	4,317	#DIV/0!	#DIV/0!	#DIV/0!	#DIV/0!	#DIV/0!	#DIV/0!	#DIV/0!	#DIV/0!	11%
Nov. 2014 Registration		0	0	0	0	0	0	0	461	461	#DIV/0!	#DIV/0!	#DIV/0!	#DIV/0!	#DIV/0!	#DIV/0!	#DIV/0!	#DIV/0!	0%
Nov. 2014 Registration		0	0	0	0	0	0	0	181	181	#DIV/0!	#DIV/0!	#DIV/0!	#DIV/0!	#DIV/0!	#DIV/0!	#DIV/0!	#DIV/0!	0%
Nov. 2014 Registration		0	0	0	0	0	0	0	164	164	#DIV/0!	#DIV/0!	#DIV/0!	#DIV/0!	#DIV/0!	#DIV/0!	#DIV/0!	#DIV/0!	4%
Submitter's Comments about the plan:																			
I think this map makes sense because ...																			

DistrictR

“Draw Your Community of Interest” focus

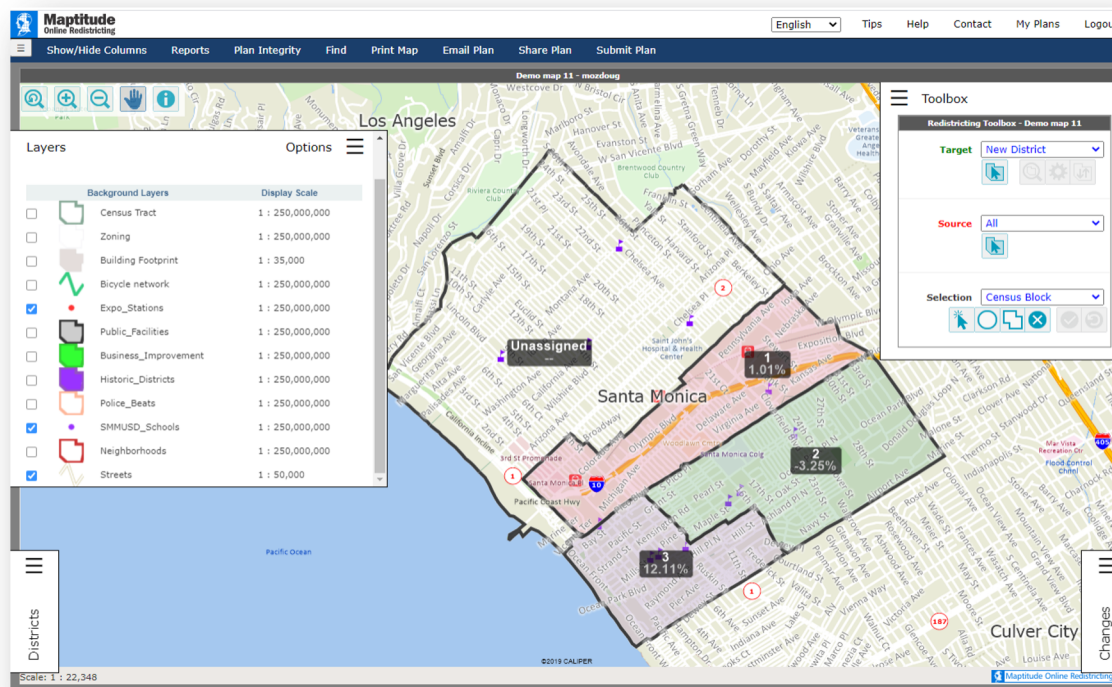
- **DistrictR.org**
- Also includes simple district-mapping tool; Only available in English
- Similar external options: Representable.org, DrawMyCACommunity.org



Caliper's “Maptitude Online Redistricting”

Full Database, Powerful Online Mapping Tool

- Powerful, common, data-rich online tool
- Six language options: English, Spanish, Portuguese, Vietnamese, Mandarin and Korean
- [Quick Start Guide](#)



Share Your Thoughts

Website

www.RedistrictKings.com

Phone

559.852.2445

Email

redistricting@co.kings.ca.us

Stay Connected

Website

www.RedistrictKings.com

Instagram

[instagram.com/RedistrictKings](https://www.instagram.com/RedistrictKings)

Facebook

[facebook.com/RedistrictKings](https://www.facebook.com/RedistrictKings)

Twitter

twitter.com/RedistrictKings

Public Hearing & Discussion

- ✓ What is your neighborhood and what are its boundaries?
- ✓ What other notable areas are in the County and its Cities, and what are their boundaries?
- ✓ Any questions about the mapping tools?

SECOND PUBLIC HEARING (August 31, 2021)

Discussion, then Action:

Vote on areas that meet each AB 849 definition:

- “neighborhoods”
- “communities of interest . . . that should be included within a single district for purposes of its effective and fair representation.”