



# REDISTRICT KINGS

## County of Kings Introduction to Redistricting

August 31, 2021

Dr. Jeff Tilton, Senior Consultant  
National Demographics Corporation

# Redistricting Process

Step	Description
<b>Initial Hearings</b> July 20, July 27, <b>August 31</b> <i>10:00 a.m.</i>	<ul style="list-style-type: none"><li>• Held prior to release of draft maps</li><li>• Educate and to solicit input on the communities in the Districts</li></ul>
<b>Census Data:</b> Mid/Late August	<ul style="list-style-type: none"><li>• Census Bureau releases official 2020 Census population data.</li></ul>
<b>California Data:</b> Early October 2021	<ul style="list-style-type: none"><li>• California Statewide Database releases California’s official ‘prisoner-adjusted’ 2020 redistricting data.</li></ul>
<b>Draft Map Hearing</b> November 3 <i>6:30 p.m.</i>	<ul style="list-style-type: none"><li>• Discuss and revise the draft maps</li><li>• Discuss the election sequence</li><li>• Draft maps due: October 20, 5 p.m.</li><li>• Draft maps posted to website by October 27, 5 p.m.</li></ul>
<b>Draft Map Hearing</b> December 7 <i>10:00 a.m.</i>	<ul style="list-style-type: none"><li>• Discuss and select a map</li><li>• Discuss and determine the election sequence; first reading of ordinance</li><li>• Draft maps due: November 22, 5 p.m.</li><li>• Draft maps posted to website by November 29, 5 p.m.</li></ul>
<b>Map Adoption</b> December 14 <i>10:00 a.m.</i>	<ul style="list-style-type: none"><li>• Final map adopted via second reading of ordinance</li></ul>

**Dates/locations subject to change**

# Redistricting Rules and Goals

---

## 1. Federal Laws

Equal Population  
Federal Voting Rights Act  
No Racial Gerrymandering



## 2. California Criteria for Counties

1. Geographically contiguous
2. Undivided neighborhoods and “communities of interest”  
(Socio-economic geographic areas that should be kept together)
3. Cities and CDP’s
4. Easily identifiable boundaries
5. Compact  
(Do not bypass one group of people to get to a more distant group of people)

### Prohibited:

“Shall not favor or discriminate against a political party.”

# Defining Neighborhoods

---

**1<sup>st</sup> Question: what is your neighborhood?**

**2<sup>nd</sup> Question: what are its geographic boundaries?**

**Examples of physical features defining a neighborhood boundary:**

- Natural neighborhood dividing lines, such as highway or major roads, rivers, canals and/or hills
- Areas around parks or schools
- Other neighborhood landmarks

**In the absence of public testimony, planning records and other similar documents may provide definition.**





# Beyond Neighborhoods: Defining Communities of Interest

---

## 1<sup>st</sup> Question: what defines your community?

- Geographic Area, plus
- Shared issue or characteristic
  - Shared social or economic interest
  - Impacted by county policies
- Tell us “your community’s story”

## 2<sup>nd</sup> Question: Would this community benefit from being “included within a single district for purposes of its effective and fair representation”?

- Or would it benefit more from having multiple representatives?

Definitions of Communities of Interest may not include relationships with political parties, incumbents, or political candidates.

# Possible Neighborhoods / Communities

---

## From the July 20, 2021, Public Hearing:

- (No comments on neighborhoods or communities of interest)

## From the July 27, 2021, Public Hearing:

- South of 198 – three different districts (currently)
- City of Hanford – four supervisor districts (currently)

## From the August 31, 2021, Public Hearing:

Submissions edited for clarity and brevity

# Public Mapping and Map Review Tools

---

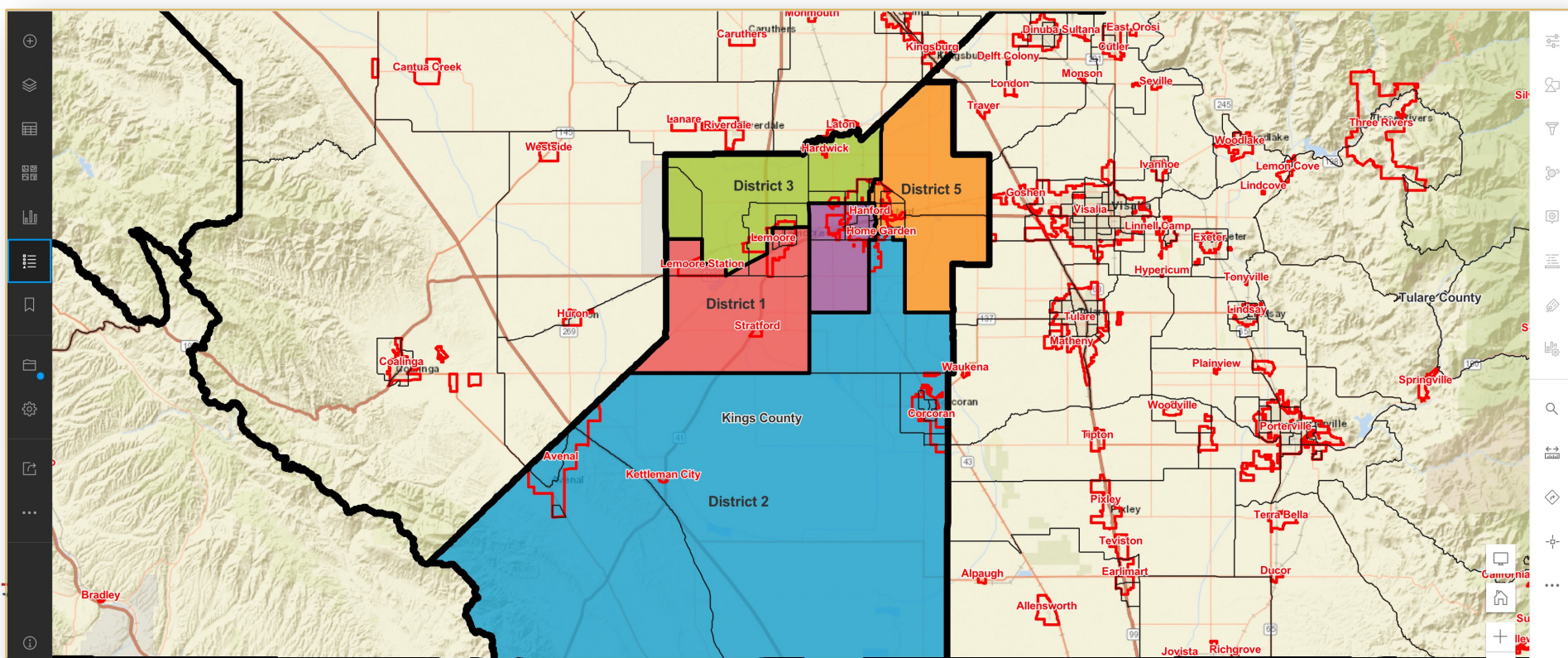
- **Different tools for different purposes**
- **Different tools for different levels of technical skill and interest**
  - Simple “review draft maps” tool
  - Easy-to-use “Draw your neighborhood” tool
  - Paper- and Excel-based simple “Draw a draft map” tools
  - Powerful, data-rich “Draw a draft map” tool

Whether you use the powerful (but complicated) online mapping tool, Excel, the paper kit, or just draw on a napkin, we welcome your maps!

# Simple Map Review Tool

## Online Interactive Review Map

- ESRI's "ArcGIS Online" – similar to Google Maps in ease of use
- Used to review, analyze and compare maps, not to create them
- Includes overlays of "community of interest" and other Story Map data



# Simple Map Drawing Tool

## Paper “Public Participation Kit”

- For those without internet access or who prefer paper
- Total Population Counts only – no demographic numbers
- Geographic units would be tracts, CDP’s and smaller cities

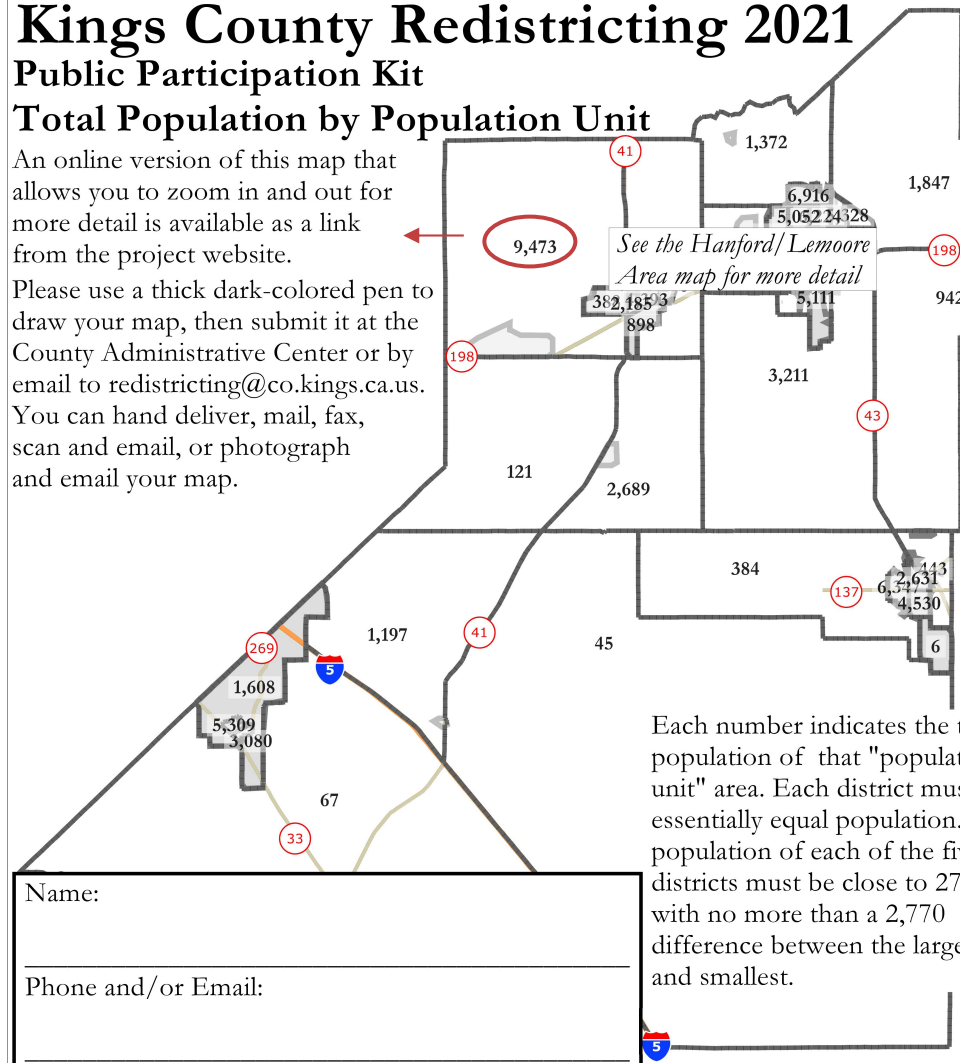
## Kings County Redistricting 2021

### Public Participation Kit

#### Total Population by Population Unit

An online version of this map that allows you to zoom in and out for more detail is available as a link from the project website.

Please use a thick dark-colored pen to draw your map, then submit it at the County Administrative Center or by email to [redistricting@co.kings.ca.us](mailto:redistricting@co.kings.ca.us). You can hand deliver, mail, fax, scan and email, or photograph and email your map.



Each number indicates the population of that "population unit" area. Each district must have essentially equal population. The population of each of the five districts must be close to 27,770 with no more than a 2,770 difference between the largest and smallest.

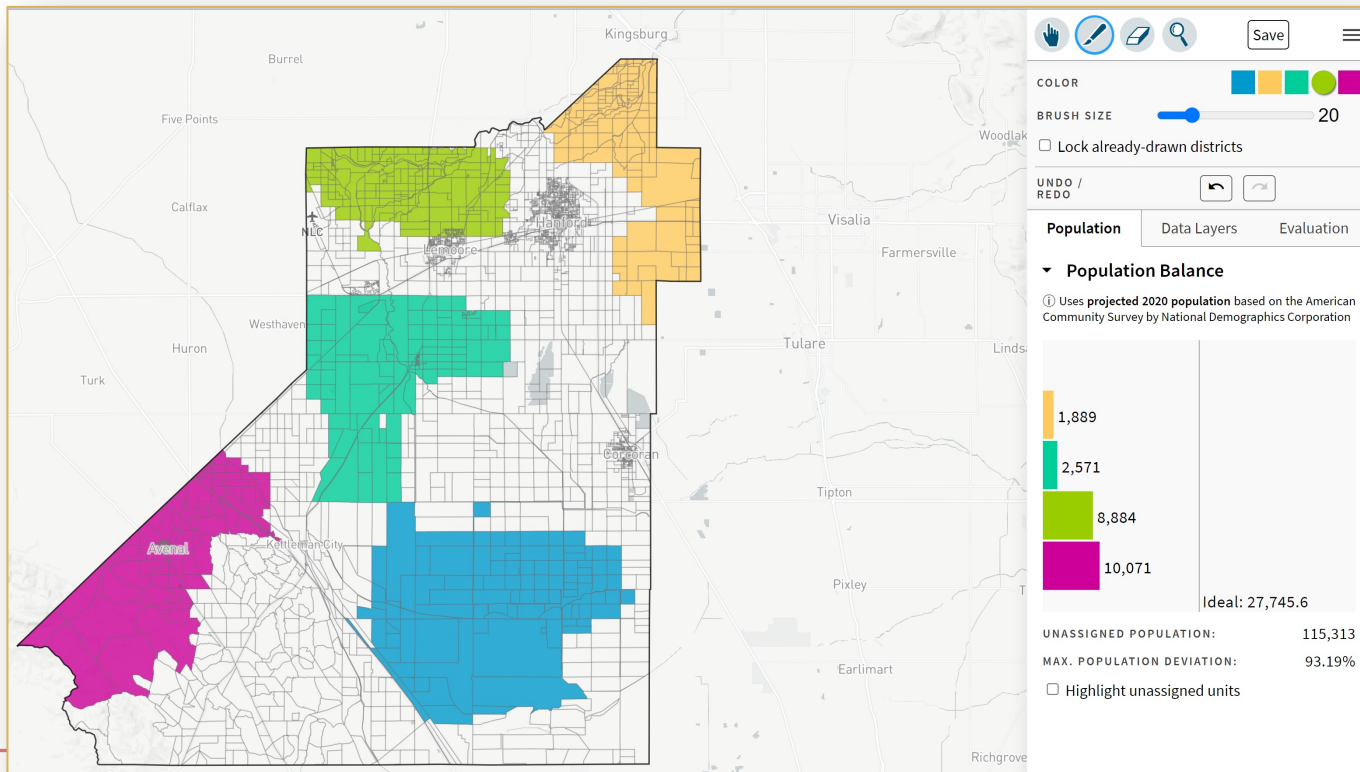




# DistrictR

## “Draw Your Community of Interest” focus

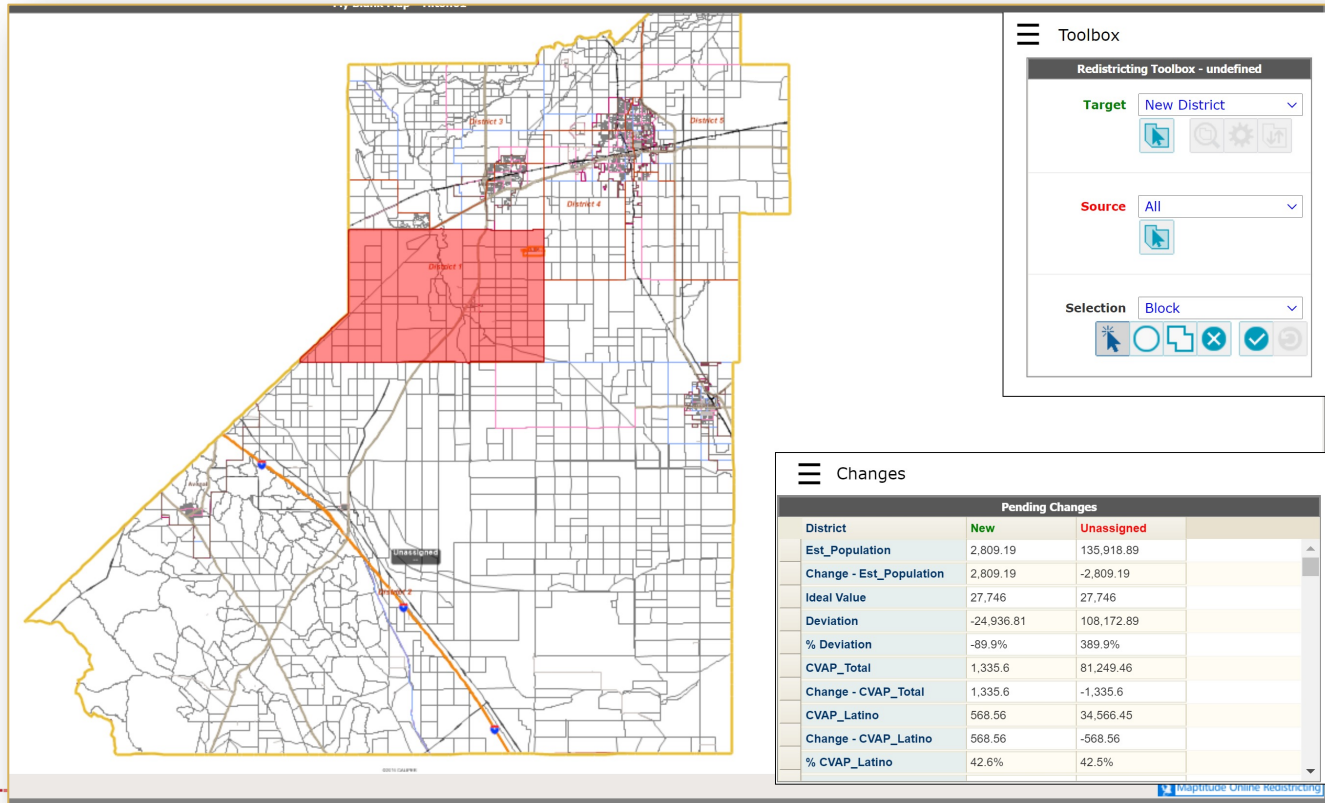
- [DistrictR.org/tag/KingsCo](https://DistrictR.org/tag/KingsCo)
- Also includes simple district-mapping tool; Only available in English
- Similar external options: [Representable.org](https://Representable.org), [DrawMyCACommunity.org](https://DrawMyCACommunity.org)



# Caliper's "Maptitude Online Redistricting"

## Full Database, Powerful Online Mapping Tool

- Powerful, common, data-rich online tool
- Six language options: English, Spanish, Portuguese, Vietnamese, Mandarin and Korean





# Share Your Thoughts



**Website:**  
[www.RedistrictKings.com](http://www.RedistrictKings.com)

**Phone:**  
**559.852.2445**

**Email:**  
[redistricting@co.kings.ca.us](mailto:redistricting@co.kings.ca.us)

# Stay Connected

---

**Website:**

[www.RedistrictKings.com](http://www.RedistrictKings.com)

**Instagram:**

[instagram.com/RedistrictKings](https://www.instagram.com/RedistrictKings)

**Facebook:**

[facebook.com/RedistrictKings](https://www.facebook.com/RedistrictKings)

**Twitter:**

[twitter.com/RedistrictKings](https://twitter.com/RedistrictKings)

# Public Hearing & Discussion

---

- ✓ What is your neighborhood and what are its boundaries?
- ✓ What other notable areas are in the County and its Cities, and what are their boundaries?
- ✓ Any questions about the mapping tools?

## Board discussion on:

- “neighborhoods”
- “communities of interest”